



Maitrey Educational Society

# Nagarjuna

**Institute of Engineering, Technology & Management**  
(AICTE, DTE Approved & Affiliated to R.T.M. Nagpur University Nagpur)

Village Satnavri, Amravati Road, Nagpur 440023

College Code - 4192

Email: [maitrey.ngp@gmail.com](mailto:maitrey.ngp@gmail.com); Website: [www.nietm.in](http://www.nietm.in); Phone No. 07118 322211, 12

## National Assessment and Accreditation Council

### AQAR 2020-21

**NAAC Criteria-7: Institutional Values and Best Practices**

**7.1 Institutional Values and Social Responsibilities**

**7.1.5 Green Campus Initiatives**



College Code - 4192

Maltrey Educational Society

# Nagarjuna

**Institute of Engineering, Technology & Management**  
(AICTE, DTE Approved & Affiliated to R.T.M. Nagpur University Nagpur)

Village Satnavri, Amravati Road, Nagpur 440023

Email: maltroy.ngp@gmail.com; Website: www.nietm.in; Phone No. 07118 322211, 12

## Criteria-7: Institutional Values and Best Practices

Metric No. 7.1.5

### Contents

Sr. No.	Particulars	Page No.
1	Summary	1
2	Restricted Entry of Automobiles	2-3
3	Ban on use of Plastic	4
4	Landscapping with Trees and Plants	5
5	Green Campus initiatives	6-9



**MAITREY EDUCATIONAL SOCIETY'S  
NAGARJUNA INSTITUTE OF ENGINEERING, TECHNOLOGY  
& MANAGEMENT, NAGPUR**

**Criterion No 7**

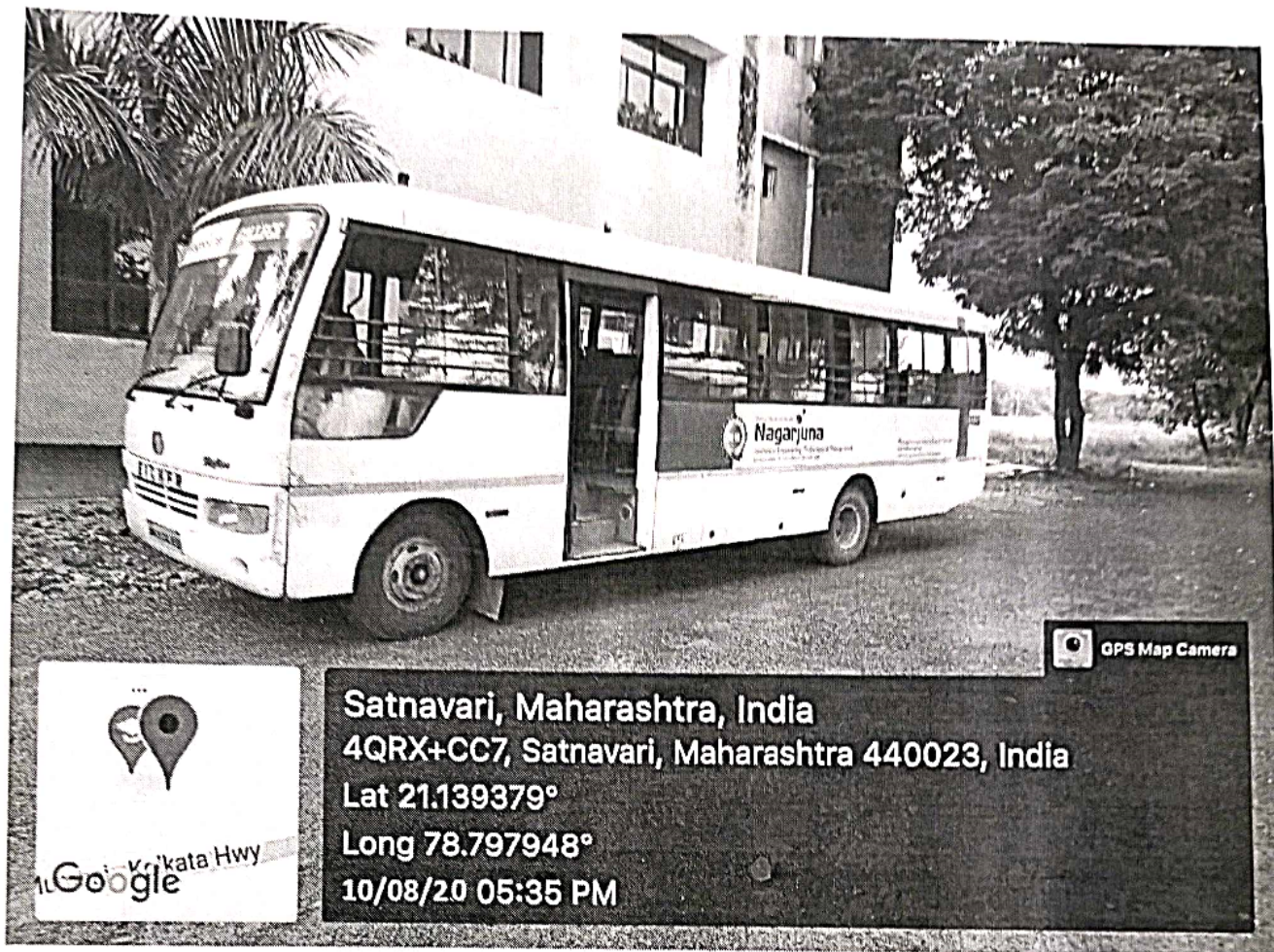
**Institutional Values and Best Practices**

**7.1.5 Green campus initiatives**

<b>S.N</b>	<b>CONTENT</b>
<b>1</b>	<b>Green Campus</b>

7.1.5.1 The institutional initiatives for greening the campus are as follows:

1. Restricted entry of automobiles.



**Fig 1. Use of Public Transport**

Majority of college staff and students come by college bus except for the students residing near the college.



**Principal**

**Nagarjuna Institute of Engineering  
Technology & management**



Fig. 2 Restricted entry of Automobiles

Restricted entry of vehicles is allowed in the college. Beyond a particular point, no vehicular entry is permitted in the institute campus.



  
Principal  
Nagarjuna Institute of Engineering  
Technology & Management

#### 4. Ban on use of Plastic

##### Plastic Free Campus




Motivational Slogans displayed in the campus premises for no-plastic zone i.e  
Ban on Use of Plastic

#### 5. Landscaping with trees and plants

Green landscaping has been done with trees and plants. Motivational slogans are displayed in campus in favour of green campus and no-plastic zone. Faculty uses one sided papers for office work so as to optimize unnecessary use of paper. The campus is located away from the main city and surrounded by green frames. The entire campus has landscaping with green grass, ornamental plants and shady trees making the campus green and beautiful. The college is having pollution-free ambience which has created pleasant environment. Tree plantation programs, helps in encouraging eco-friendly environment, which provides pure oxygen within the institute and awareness among the villagers. Through NSS, students are encouraged and motivated to plant sapling in the college as well as at the selected places outside the campus.



  
Principal  
Nagarjuna Institute of Engineering  
Technology & management



### **Tree Plantation Program 2020-21**

In our Institute, there are many big trees like Ashok, Neem, Pipal, Wad, Jack-fruit, Coconut, Pine, Oak etc. They provide us fresh air and good ambience surrounding our college. Every year, we plant more than 100 trees in our campus and maintain by watering them regularly. Every year, in the rainy season, we plan Tree Plantation Program with the help of Faculties and students. It is a good initiative for making campus green and with a pleasant environment. The lawn is maintained in proper shape by cutting the excess material by proper mowing of the lawn.



**Principal**  
**Nagarjuna Institute of Engineering**  
**Technology & management**

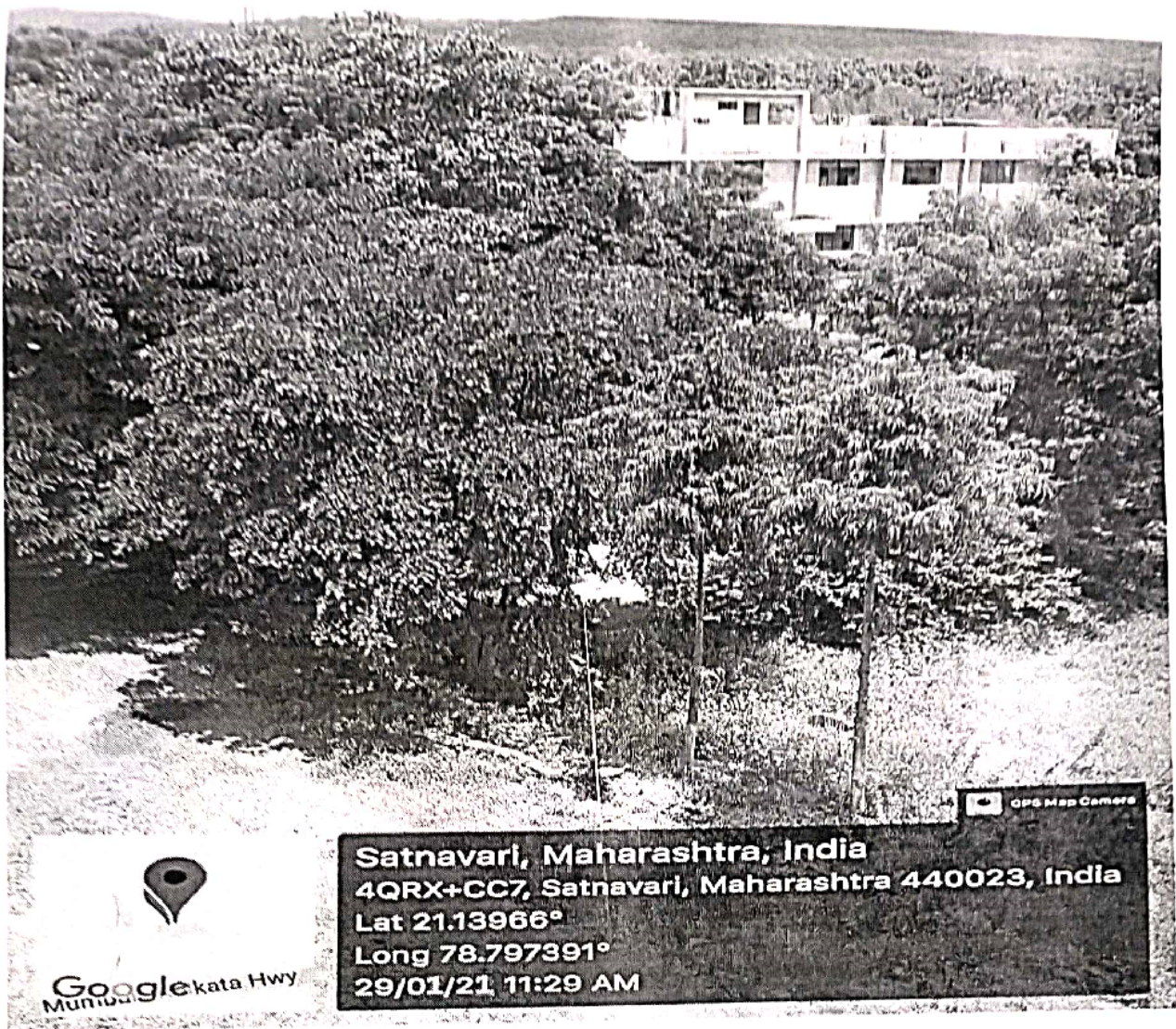


Fig.-1 Green Campus initiatives



**Principal**  
**Nagarjuna Institute of Engineering**  
**Technology & management**



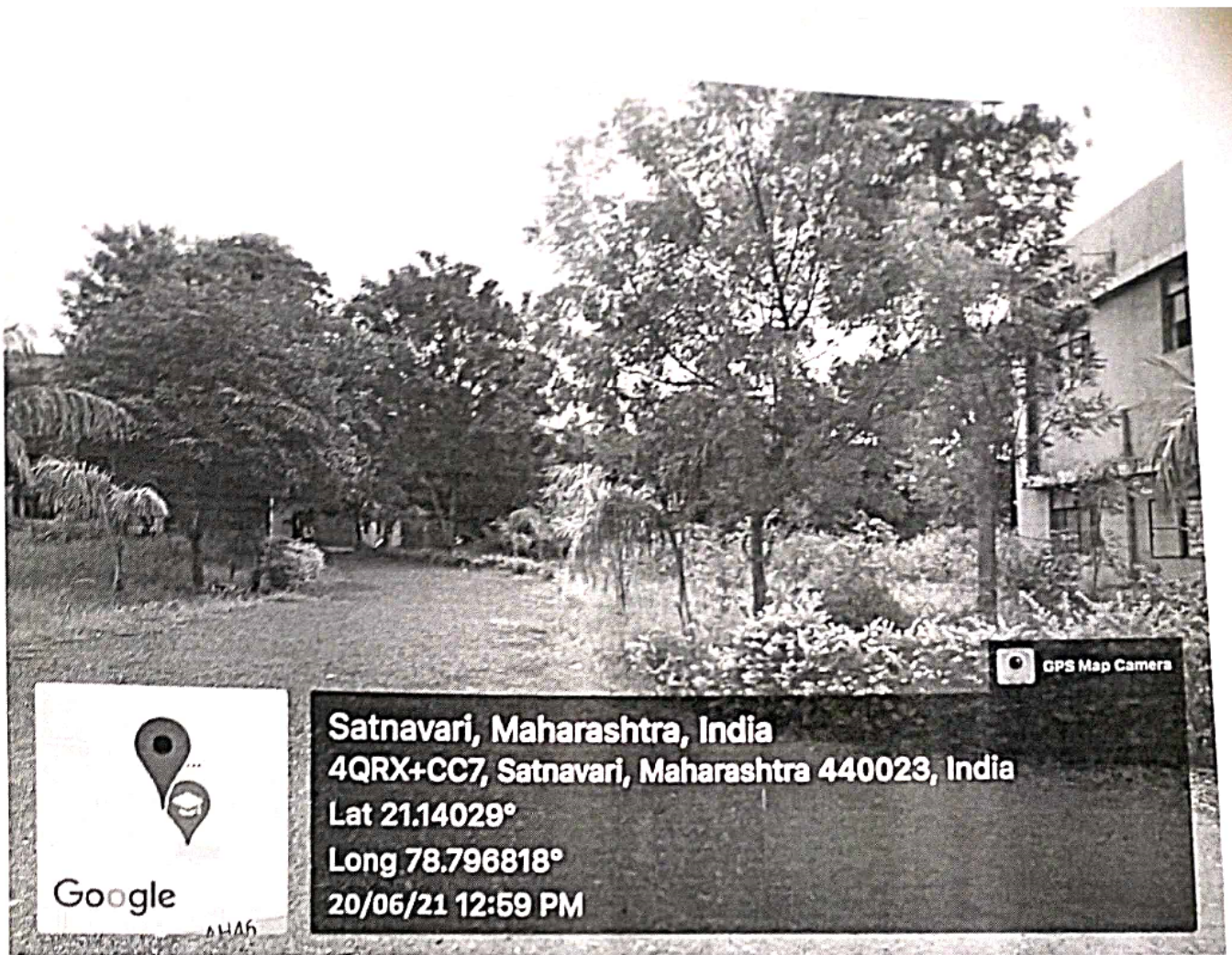


Fig.-2 Green Campus initiatives



  
Principal  
Nagarjuna Institute of Engineering  
Technology & management

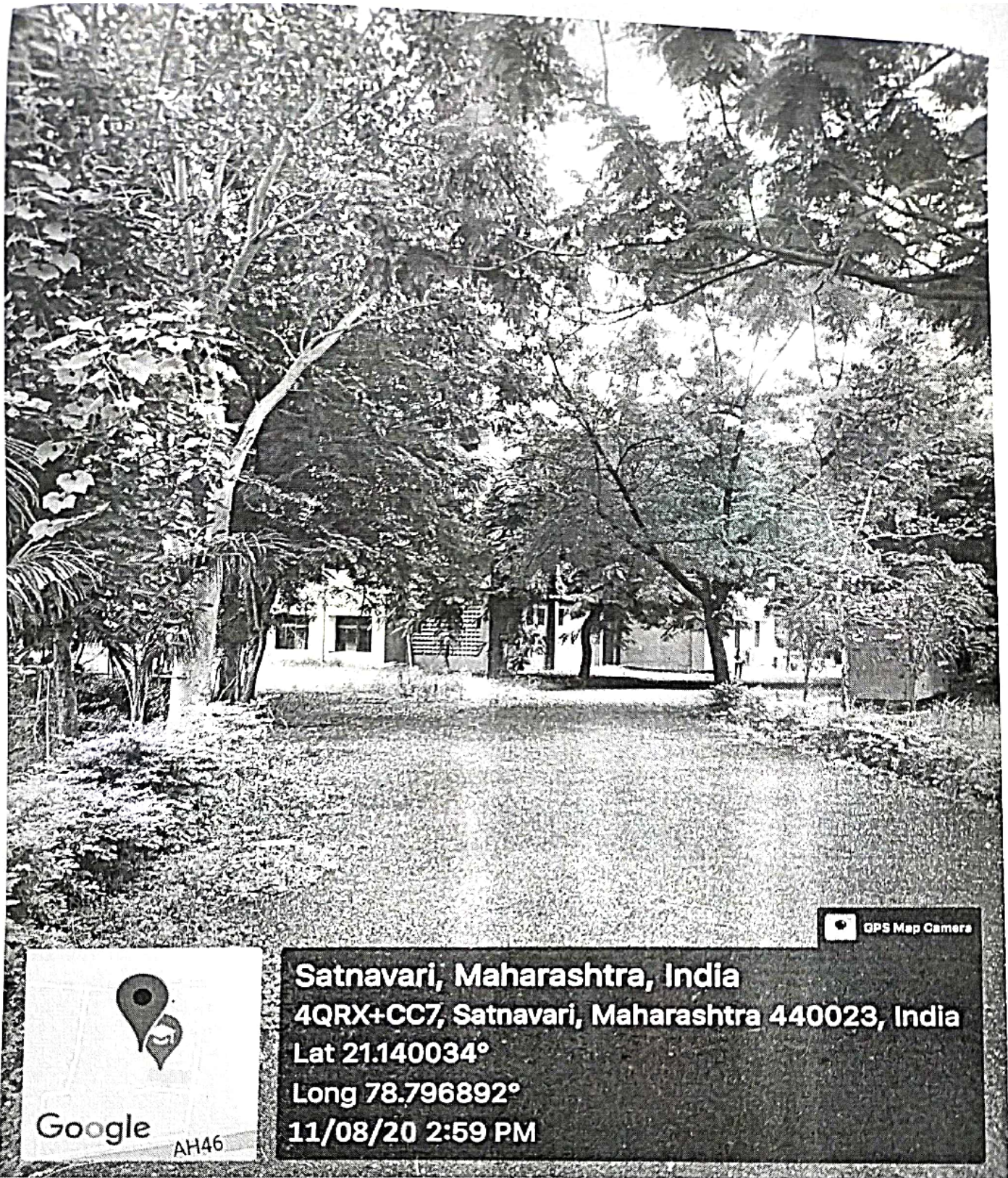
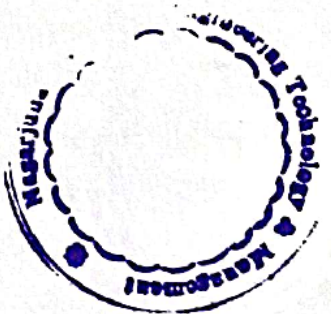


Fig.-3 Green Campus initiatives



  
**Principal**  
Nagarjuna Institute of Engineering &  
Technology & Management

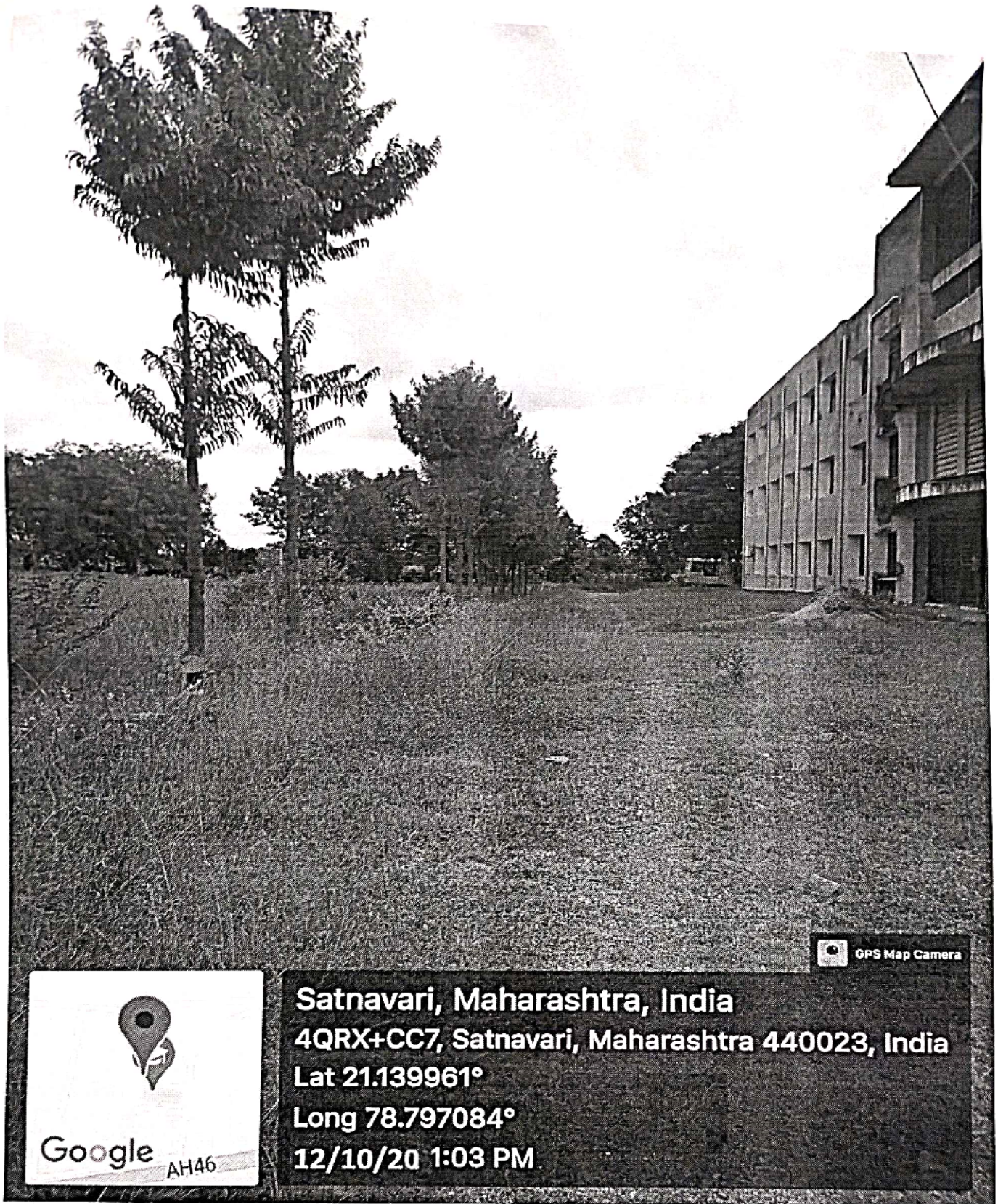


Fig.-4 Green Campus initiatives



  
**Principal**  
**Nagarjuna Institute of Engineering**  
**Technology & management**