



Nagarjuna

Institute of Engineering, Technology & Management
(AICTE, DTE Approved & Affiliated to R.T.M. Nagpur University Nagpur)

Village Satnavri, Amravati Road, Nagpur 440023

Email: maltrey.ngp@gmail.com; Website: www.nietm.in; Phone No. 07118 322211, 12

National Assessment and Accreditation Council

AOAR 2020-21

NAAC Criteria-7: Institutional Values and Best Practices

7.1 Institutional Values and Social Responsibilities

7.1.6 Quality Audits on environment and energy are regularly undertaken by the institution



College Code - 4192

Maltrey Educational Society

Nagarjuna

Institute of Engineering, Technology & Management
(AICTE, DTE Approved & Affiliated to R.T.M. Nagpur University Nagpur)

Village Satnavri, Amravati Road, Nagpur 440023

Email: maltrey.ngp@gmail.com; Website: www.nietm.in; Phone No. 07118 32211, 12

Criteria-7: Institutional Values and Best Practices

Metric No. 7.1.6

Contents

Sr. No.	Particulars	Page No.
1	Summary	1
2	Green Audit Report 2020-2021	2-26



**MAITREY EDUCATIONAL SOCIETY'S
NAGARJUNA INSTITUTE OF ENGINEERING, TECHNOLOGY
& MANAGEMENT, NAGPUR**

Criterion No 7

Institutional Values and Best Practices

7.1.6 Quality Audits on environment and energy are regularly undertaken by the institution

S.N	CONTENT
1	Green Audit Report along with the Certificate

NAGARJUNA INSTITUTE OF ENGINEERING, TECHNOLOGY & MANAGEMENT,
Satnavri Amravati Road, Nagpur-440023



Nagarjuna

Institute of Engineering,
Technology & Management



GREEN AUDIT REPORT

2020-2021

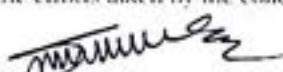
NAGARJUNA INSTITUTE OF ENGINEERING, TECHNOLOGY & MANAGEMENT,
Satnavri Amravati Road, Nagpur-440023

Certificate

Green Audit Team has prepared this report for Nagarjuna Institute of Engineering, Technology and Management, Nagpur-440023 (NIETM) based on College representatives data compiled with the best judgment capacity of the expert team. All reasonable care has been taken in its preparation based on information gathered at site.

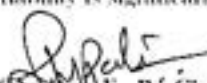
To preserve the ecosystem and biodiversity within the campus, various viewpoints are applied as far as vegetation composition and total number of each plant species found in the college premises are concerned. Green audit is defined as an official data collection and verification of each components/units installed or runs in the college in terms of maintenance of ecofriendly campus and sustenance of healthy ecosystem. As a part of such practice, internal and external Green Audit is conducted to evaluate the actual scenario at the campus. The methodology included: physical inspection of the campus, observation and review of the documentation, interviewing key persons and data analysis and recommendations. It works on the several facets of 'Green Campus' including Green Cover, Plantation, Biodiversity, Water Conservation, Alternative Energy etc.

It was observed that a number of environmental friendly practices are undertaking in the college as a part of environmental sustainability. The college constantly strives to care the mother earth and motivate the students keep the campus eco-friendly. The efforts taken by the college towards environment and sustainability is significant.


(Dr. Subhash R. Sonkuwar)

External green audit officer

HOD-Botany
Dr. Ambedkar College
Deekhabhoomi, Nagpur


(Dr. Anjali R. Chaudhary)

External green audit Co-officer

GREEN AUDIT REPORT 2020-2021


Principal
Nagarjuna Institute of Engineering
Technology & Management



GREEN AUDIT REPORT 2020-2021

Trees, Shrubs and Lianas occurs in NIETM Premises
2020-21

Sl. No.	Botanical Name	Family	Common Name	Total No. of Individual/s	Total No. of Sapling/s
1	<i>Abutilon indicum</i>	Malvaceae	Indian mallow	85	12
2	<i>Acacia nilotica</i>	Fabaceae	Babul	11	6
3	<i>Acacia concinna</i>	Fabaceae	Shikakai	7	1
4	<i>Acacia catechu</i>	Fabaceae	Khair	4	2
5	<i>Acacia leucophleca</i>	Fabaceae	Hiwar	6	3
6	<i>Acalypha hispida</i>	Euphorbiaceae	fox tail	148	-
7	<i>Achyranthes aspera</i>	Amaranthaceae	Kutri	95	-
8	<i>Aegle marmelos</i>	Rutaceae	Bel	2	-
9	<i>Agave sisalana</i>	Asparagaceae	Ghatyapat	3	-



NAGARJUNA INSTITUTE OF ENGINEERING, TECHNOLOGY & MANAGEMENT,
Satnavri Amravati Road, Nagpur-440023

10	<i>Allium cepa</i>	Amaryllidaceae	Kanad	29	-
11	<i>Andrographis echinoides</i>	Acanthaceae	Bhuineem	127	
12	<i>Alstonia scholaris</i>	Apocynaceae	Saptarni	15	9
13	<i>Aralia sp.</i>	Araliaceae	Aralia	22	-
14	<i>Argemone mexicana</i>	Papaveraceae	Pipla dudi	64	-
15	<i>Albizia procera</i>	Fabaceae	Pandara Siris	13	5
16	<i>Albizia sp.</i>	Fabaceae	Siris	6	2
17	<i>Aloe vera</i>	Asphodelaceae	Aloe vera	15	6
18	<i>Alternanthera sessilis</i>	Amaranthaceae	Kanchari	423	63
19	<i>Amaranthus viridis</i>	Amaranthaceae	Chawlibhaji	154	-
20	<i>Azadirachta indica</i>	Meliaceae	Neem	21	7
21	<i>Baliospermum montanum</i>	Euphorbiaceae	Danti	29	7
22	<i>Bambusa arundinacea</i>	Poaceae	Bamboo	9	3



NAGARJUNA INSTITUTE OF ENGINEERING, TECHNOLOGY & MANAGEMENT,
Sainavri Amravati Road, Nagpur-440023

23	<i>Bauhinia purpurea</i>	Fabaceae	Kanchan	36	-
24	<i>Bauhinia racemosa</i>	Fabaceae	Apta	10	-
25	<i>Boerhavia diffusa</i>	Nyctaginaceae	Khaperkhuti	351	37
26	<i>Brassica oleracea var. botrytis</i>	Cruciferaeae	Fulgobi	21	-
27	<i>Bryophyllum pinnatum</i>	Crassulaceae	Papfuti	4	-
28	<i>Butea monosperma</i>	Fabaceae	Palas	35	16
29	<i>Canavalia gladiata</i>	Fabaceae	Badi sem	23	-
30	<i>Casuarina equisetifolia</i>	Casuarinaceae	Beach pine,	6	2
31	<i>Cardiospermum halicacabum</i>	Sapindaceae	Kapalphodi	7	-
32	<i>Cardiospermum microcarpa</i>	Sapindaceae	Kapalphodi	13	4
33	<i>Callistemon citrinus</i>	Myrtaceae	Bottlebrush	-	4
34	<i>Convolvulus arvensis</i>	Convolvulaceae	Morning glory	63	16
35	<i>Carica papaya</i>	Caricaceae	Papaya	3	-



NAGARJUNA INSTITUTE OF ENGINEERING, TECHNOLOGY & MANAGEMENT.
Satnavri Amravati Road, Nagpur-440023

36	<i>Citrus limon</i>	Rutaceae	Limboo	19	5
37	<i>Cocos nucifera</i>	Arecaceae	Naral	4	2
38	<i>Cocculus hirsutus</i>	Menispermaceae	Washingwel	129	-
39	<i>Crinum viviparum</i>	Amaryllidaceae	River Lily	3	4
40	<i>Crinum asiaticum</i>	Amaryllidaceae	River Lily	9	7
41	<i>Cycas circinalis</i>	Cycadaceae	Cycas	3	3
42	<i>Cucurbita sp.</i>	Cucurbitaceae	Cucurbita	13	5
43	<i>Cucumaria sp</i>	Cucurbitaceae	Cucumaria	4	-
44	<i>Croton bonplandianum</i>	Euphorbiaceae	Croton	20	3
45	<i>Codiaeum variegatum</i>	Euphorbiaceae	Croton	11	-
46	<i>Corchorus capsularis</i>	Malvaceae	Banpat	150	-
47	<i>Croton sp.</i>	Euphorbiaceae	Croton	63	-
48	<i>Celosia argentea</i>	Amaranthaceae	Kombda	86	18



NAGARJUNA INSTITUTE OF ENGINEERING, TECHNOLOGY & MANAGEMENT,
Satnavri Annavati Road, Nagpur-440023

49	<i>Clitoria ternatea</i>	Fabaceae	Gokuma	57	3
50	<i>Combretum ovalifolium</i>	Combretaceae	Veragai	11	3
51	<i>Cosmos bipinnatus</i>	Asteraceae	garden cosmos	16	-
52	<i>Clerodendrum phlomidis</i>	Lamiaceae	Bhandira	106	27
53	<i>Cryptolepis buchananii</i>	Apocynaceae	Dudwel	26	8
54	<i>Calotropis procera</i>	Apocynaceae	Rui	23	2
55	<i>Capsicum annuum</i>	Solanaceae	Mirchi	21	-
56	<i>Coix lacryma-jobi</i>	Poaceae	Ran Maka	230	-
57	<i>Cordia dichotoma</i>	Boraginaceae	Bhokar	8	2
58	<i>Cassia fistula</i>	Fabaceae	Bahava	27	7
59	<i>Cymbopogon martini</i>	Poaceae	Gawat	153	-
60	<i>Cyperus difformis</i>	Cyperaceae	Gawat	76	-
61	<i>Dalbergia sissoo</i>	<u>Fabaceae</u>	Sisam	9	5



NAGARJUNA INSTITUTE OF ENGINEERING, TECHNOLOGY & MANAGEMENT.
Satnavri Amravati Road, Nagpur-440023

49	<i>Clitoria ternatea</i>	Fabaceae	Gokurna	57	3
50	<i>Combretum ovalifolium</i>	Combretaceae	Veragai	11	3
51	<i>Cosmos bipinnatus</i>	Asteraceae	garden cosmos	16	-
52	<i>Clerodendrum phlomidis</i>	Lamiaceae	Bhandira	106	27
53	<i>Cryptolepis buchananii</i>	Apocynaceae	Dudwel	26	8
54	<i>Calotropis procera</i>	Apocynaceae	Rui	23	2
55	<i>Capsicum annuum</i>	Solanaceae	Mirchi	21	-
56	<i>Coix lacryma-jobi</i>	Poaceae	Ran Maka	230	-
57	<i>Cordia dichotoma</i>	Boraginaceae	Bhokur	8	2
58	<i>Cassia fistula</i>	Fabaceae	Bahava	27	7
59	<i>Cymbopogon martini</i>	Poaceae	Gawat	153	-
60	<i>Cyperus difformis</i>	Cyperaceae	Gawat	76	-
61	<i>Dalbergia sissoo</i>	<u>Fabaceae</u>	Sisam	9	5



NAGARJUNA INSTITUTE OF ENGINEERING, TECHNOLOGY & MANAGEMENT.
Satnavri Amravati Road, Nagpur-440023

62	<i>Datura metel</i>	Solanaceae	Datura	32	6
63	<i>Delonix regia</i>	Fabaceae	Gulmohar	53	13
64	<i>Desmodium gangeticum</i>	Fabaceae	Shalaparni	73	-
65	<i>Digera muricata</i>	Amaranthaceae	Getna	86	14
66	<i>Diplocyclos palmatus</i>	Cucurbitaceae	Shivlingi	68	-
67	<i>Dolichos lablab</i>	Fabaceae	Wall	26	-
68	<i>Dracaena reflexa</i>	Asparagaceae	Dracaena	95	2
69	<i>Dracaena fragrans</i>	Asparagaceae	Dracaena	61	-
70	<i>Dracaena sp</i>	Asparagaceae	Dracaena	15	-
71	<i>Dregea volubilis</i>	Apocynaceae	Akad bel.	26	3
72	<i>Duranta repens</i>	Verbenaceae	Duranta	904	-
73	<i>Dyopsis lutescens</i>	Arecaceae	Areca palm	35	7
74	<i>Eclipta prostrata</i>	Asteraceae	Bhringaraj	73	-



NAGARJUNA INSTITUTE OF ENGINEERING, TECHNOLOGY & MANAGEMENT,
Satnavri Amravati Road, Nagpur-440023

75	<i>Erythrina variegata</i>	Fabaceae	Pangara	13	5
76	<i>Euphorbia tithymaloides</i>	Euphorbiaceae	Euphorbia	1	-
77	<i>Euphorbia milli</i>	Euphorbiaceae	Euphorbia	98	25
78	<i>Euphorbia hirta</i>	Euphorbiaceae	dudi	722	67
79	<i>Ficus hispida</i>	Moraceae	katumber	47	24
80	<i>Ficus religiosa</i>	Moraceae	Pipal	3	2
81	<i>Ficus racemosa</i>	Moraceae	Umber	9	2
82	<i>Ficus microcarpa</i>	Moraceae	Berry	87	9
83	<i>Grewia hirsuta</i>	Malvaceae	Govli	3	4
84	<i>Hemidesmus indicus</i>	Apocynaceae	Khobarwel	42	18
85	<i>Hyptis suaveolens</i>	Lamiaceae	Vilayati Tulasi	51	11
86	<i>Hibiscus rosa-sinensis</i>	Malvaceae	Jaswand	2	2
87	<i>Hibiscus sp. 1</i>	Malvaceae	Jangli Bhendi	7	-



NAGARJUNA INSTITUTE OF ENGINEERING, TECHNOLOGY & MANAGEMENT.
Satnavri Amravati Road, Nagpur-440023

88	<i>Hibiscus sp.2</i>	Malvaceae	Jangli Bhendi	47	-
89	<i>Hibiscus sabdariffa</i>	Malvaceae	tambdi-ambadi	28	-
90	<i>Isomeles sp</i>	Lamiaceae	Duipmal	7	2
91	<i>Ixora coccinia</i>	Rubiaceae	Lokhandi	26	7
92	<i>Ixora coccinea</i>	Rubiaceae	Lokhandi	21	7
93	<i>Ipomoea hederifolia</i>	Convolvulaceae	Suryakanti	23	-
94	<i>Jatropha integerrima</i>	Euphorbiaceae	Ornamental Jatropha	7	-
95	<i>Jatropha podagrica</i>	Euphorbiaceae	Jatropha	4	17
96	<i>Justicia procumbens</i>	Acanthaceae	Karambal	183	-
97	<i>Lagenaria siceraria</i>	Cucurbitaceae	Dudhi	16	-
98	<i>Lantana camara</i>	Verbenaceae	Ghaneri	139	9
99	<i>Lawsonia inermis</i>	Lythraceae	Mehandi	2	3
100	<i>Lagerstroemia speciosa</i>	Lythraceae	Pride of Maharashtra	-	3



NAGARJUNA INSTITUTE OF ENGINEERING, TECHNOLOGY & MANAGEMENT.
Satnavri Amravati Road, Nagpur-440023

101	<i>Leucaena leucocephala</i>	Fabaceae	Subabul	33	8
102	<i>Luffa aegyptiaca</i>	Cucurbitaceae	Dhodka/Padwal	3	-
103	<i>Madhuca longifolia</i>	Sapotaceae	Moha	-	9
104	<i>Malachra capitata</i>	Malvaceae	Vilayati Bhendi	131	-
105	<i>Manilkara zapota</i>	Sapotaceae	Chikku	20	2
106	<i>Minusops elengi</i>	Sapotaceae	Bakul	19	-
107	<i>Mangifera indica</i>	Anacardiaceae	Aamba	17	2
108	<i>Mentha piperita</i>	Lamiaceae	Pudina	109	-
109	<i>Millettia pinnata</i>	Fabaceae	Karanj	9	7
110	<i>Mitragyna parvifolia</i>	Rubiaceae	Karumb	2	-
111	<i>Mimosa hamata</i>	Fabaceae	Gulabi babul	29	-
112	<i>Morus alba</i>	Moraceae	Sahtut	1	-
113	<i>Morinda citrifolia</i>	Rubiaceae	Noni	34	8



NAGARJUNA INSTITUTE OF ENGINEERING, TECHNOLOGY & MANAGEMENT.
Satnavri Amravati Road, Nagpur-440023

114	<i>Moringa oleifera</i>	Moringaceae	Mungna	14	-
115	<i>Mucuna pruriens</i>	Fabaceae	Khachkuli	11	3
116	<i>Mukia maderaspatana</i>	Cucurbitaceae	Ghugri	4	-
117	<i>Murraya exotica</i>	Rutaceae	Murraya	203	-
118	<i>Murraya koenigii</i>	Rutaceae	Godnimb	3	-
119	<i>Muntingia calabura</i>	Muntingiaceae	Cherry	8	2
120	<i>Nelumbo nucifera</i>	Nelumbonaceae	Kamal	6	-
121	<i>Nerium oleander</i>	Apocynaceae	Kaner	106	-
122	<i>Neolamarckia cadamba</i>	Rubiaceae	Kadamb	28	3
123	<i>Ocimum tenuiflorum</i>	Lamiaceae	Tulsi	84	9
124	<i>Parthenium hysterophorus</i>	Asteraceae	Gajar gawat	457	-
125	<i>Polyalthia longifolia</i>	Annonaceae	Ashoka	42	5
126	<i>Peltophorum pterocarpum</i>	Fabaceae	tamrashimbi	2	2



NAGARJUNA INSTITUTE OF ENGINEERING, TECHNOLOGY & MANAGEMENT,
Satnavri Amravati Road, Nagpur-440023

127	<i>Pergularia daemia</i>	Asclepiadaceae	Utranwel	21	3
128	<i>Phoenix sylvestris</i>	Arecaceae	Shindi	5	-
129	<i>Phoenix sp.1</i>	Arecaceae	Shindi	6	-
130	<i>Phoenix sp.2</i>	Arecaceae	Shindi	9	-
131	<i>Phoenix sp.3</i>	Arecaceae	Shindole	17	-
132	<i>Phyllanthus emblica</i>	Phyllanthaceae	Aamla	3	1
133	<i>Physalis angulata</i>	Solanaceae	Phophundi	154	-
134	<i>Plumeria rubra</i>	Apocynaceae	Chafa	21	-
135	<i>Philodendron sp.</i>	Araceae	Show well	7	13
136	<i>Pithecellobium dulce</i>	Fabaceae	Chichbilai	3	23
137	<i>Phyllanthus reticulatus</i>	Phyllanthaceae	Kalaawla	8	2
138	<i>Phyllanthus virgatus</i>	Phyllanthaceae	Kalaawla	9	7
139	<i>Phyllanthus niruri</i>	Phyllanthaceae	Bhuiawla	34	-



NAGARJUNA INSTITUTE OF ENGINEERING, TECHNOLOGY & MANAGEMENT,
Satnavri Amravati Road, Nagpur-440023

140	<i>Phyllanthus amarus</i>	Phyllanthaceae	Bhuiawla	17	-
141	<i>Portulaca oleracea</i>	Portulacaceae	Ghol	30	-
142	<i>Rhynchosia minima</i>	Fabaceae	Dhakta	79	-
143	<i>Ricinus communis</i>	Euphorbiaceae	Airand	189	-
144	<i>Psidium guajava</i>	Myrtaceae	Jamb	19	-
145	<i>Rosa indica</i>	Rosaceae	Gulab	247	-
146	<i>Roystonea regia</i>	Arecaceae	Royal Palm	56	-
147	<i>Sansevieria roxburghiana</i>	Asparagaceae	Foxglove	4	-
148	<i>Sida cordifolia</i>	Malvaceae	Chikna	31	-
149	<i>Sida mysorensis</i>	Malvaceae	Chikna	17	-
150	<i>Securinega leucopyrus</i>	Phyllanthaceae	Ainta	84	3
151	<i>Senna tora</i>	Fabaceae	Tarota	179	6
152	<i>Sesbania sesban</i>	Fabaceae	Shewarie	61	25




 Principal
 Nagarjuna Institute of Engineering
 Technology & Management

NAGARJUNA INSTITUTE OF ENGINEERING, TECHNOLOGY & MANAGEMENT,
Satnavri Auravati Road, Nagpur-440023

153	<i>Samanea saman</i>	Fabaceae	Gulabi Shiris	5	8
154	<i>Scoparia dulcis</i>	Plantaginaceae	Bon Dhonya	123	-
155	<i>Solanum melongena</i>	Solanaceae	Wange	15	-
156	<i>Soyimida febrifuga</i>	Meliaceae	Rohini	3	8
157	<i>Spathodea campanulata</i>	Bignoniaceae	Fountain Tree	-	3
158	<i>Striga asiatica</i>	Orobanchaceae	Pivla agya	76	-
159	<i>Syzygium cumini</i>	Myrtaceae	Jambul	13	6
160	<i>Tabebuia rosea</i>	Bignoniaceae	Gulabi Rani	2	-
161	<i>Tecoma stans</i>	Bignoniaceae	Ghatpuspa	5	2
162	<i>Tabernaemontana divaricata</i>	Apocynaceae	Swastik	21	-
163	<i>Tabernaemontana sp.</i>	Apocynaceae	Tagar	32	-
164	<i>Tagetes erecta</i>	Asteraceae	Zendu	152	-
165	<i>Tragia involucrata</i>	Euphorbiaceae	Khachkuli	50	26



NAGARJUNA INSTITUTE OF ENGINEERING, TECHNOLOGY & MANAGEMENT,
Satnavri Amravati Road, Nagpur-440023

166	<i>Tephrosia purpurea</i>	Fabaceae	Sarphonk	71	-
167	<i>Terminalia catappa</i>	Combretaceae	Badam	1	1
168	<i>Thuja occidentalis</i>	Cupressaceae	Vidya	29	1
169	<i>Tinospora cordifolia</i>	Menispermaceae	Gudwel	10	-
170	<i>Tridax procumbens</i>	Asteraceae	Kambarnodi	934	-
171	<i>Trichodesma indicum</i>	Boraginaceae	Chota kalpa	61	-
172	<i>Ventilago denticulata</i>	Rhamnaceae	khaand vaela	31	17
173	<i>Vitis vinifera</i>	Vitaceae	Jangliangur	45	5
174	<i>Vernonia cinerea</i>	Asteraceae	Sahdevi	353	-
175	<i>Vigna radiata</i>	Fabaceae	Barbati	8	-
176	<i>Vinca rosea</i>	Apocynaceae	Sadaphuli	12	-
177	<i>Woodfordia fruticosa</i>	Lythraceae	Dhalas	16	-
178	<i>Ziziphus jujuba</i>	Rhamnaceae	Bor	39	7



NAGARJUNA INSTITUTE OF ENGINEERING, TECHNOLOGY & MANAGEMENT,
Satnavri Amravati Road, Nagpur-440023

179	<i>Zornia gibbosa</i>	Fabaceae	Kachra	31	-
-----	-----------------------	----------	--------	----	---

	ATTRIBUTES	VARIABLES
COLLEGE AREA	Total Area	12 Acre
	Total Built up area	14000.32 Sq. Mt.
	Garden and Lawn area	3000 Sq. ft.
POPULATION	Students	602
	Teachers	48
	Non-Teaching Staffs	13



AUDIT KEY STEPS


 Principal
 Nagarjuna Institute of Engineering
 Technology & management

NAGARJUNA INSTITUTE OF ENGINEERING, TECHNOLOGY & MANAGEMENT,
Satnavri Amravati Road, Nagpur-440023

Planning	September-2020
First Field work completed	October - 2020
Second Field work completed	December -2020
Preliminary report	January -2021
Draft report completed and sent for office response	May -2021
Office response received	August -2021
Final report (DPR) completed	October -2021



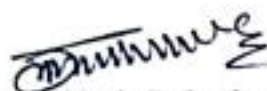

Principal
Nagarjuna Institute of Engineering,
Technology & Management

NAGARJUNA INSTITUTE OF ENGINEERING, TECHNOLOGY & MANAGEMENT,
Sahnavri Amravati Road, Nagpur-440023

ACKNOWLEDGEMENTS

The green audit conducted by the Nagarjuna Institute of Engineering, Technology and Management, Nagpur-440023 (NIETM) is an internal audit that aims towards looking after a healthy environment and to take green initiatives to foster the ecofriendly environment for future sustainability.

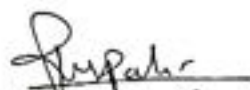
Sincere thanks to the Principal, Nagarjuna Institute of Engineering, Technology and Management, Nagpur, and internal green audit supporting staff for providing us necessary data, facilities and co-operation during the excursion and audit period that helped in making the audit report possible.



(Dr. Subhash R. Somkuwar)

External green audit officer

HOD-Botany
Dr. Ambedkar College
Deekshabhoomi, Nagpur



(Dr. Rupali R. Chauhan)

External green audit Co-officer

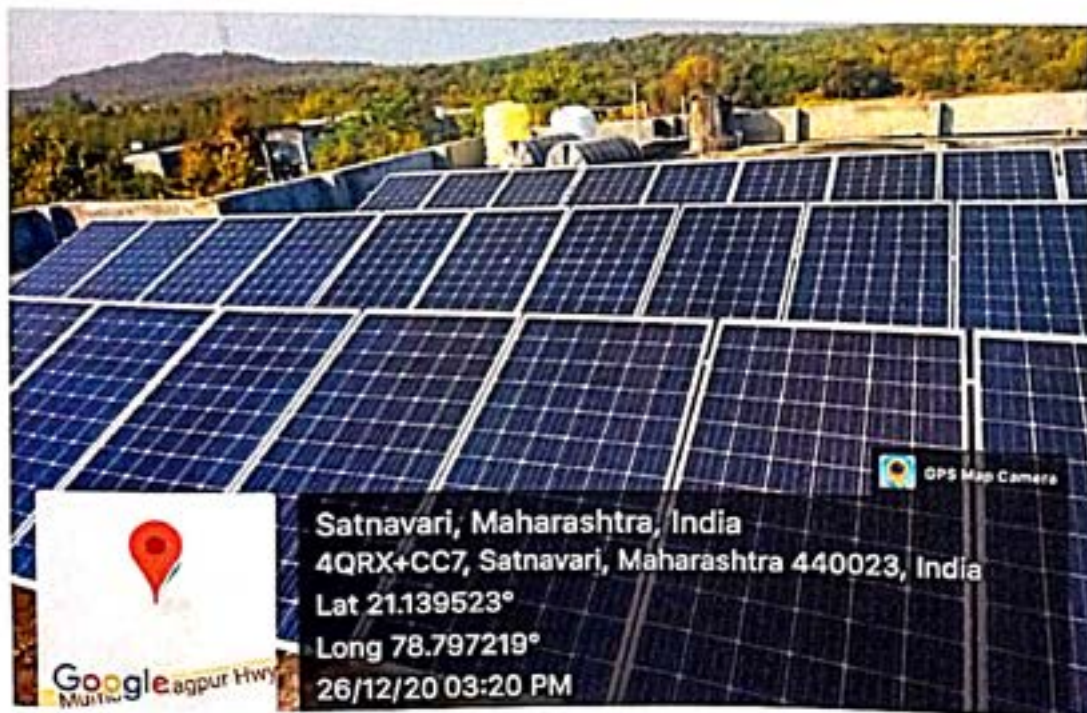


Principal
Nagarjuna Institute of Engineering
& Technology & management



NAGARJUNA INSTITUTE OF ENGINEERING, TECHNOLOGY & MANAGEMENT.
Satnavri Amravati Road, Nagpur-440023

Solar System Units.: Towards Energy Conservation, the institute has solar powered lights inside the campus. The institute is promoting the use of renewable energy sources.



(Signature)
Principal
Nagarjuna Institute of Engineering,
Technology & management

NAGARJUNA INSTITUTE OF ENGINEERING, TECHNOLOGY & MANAGEMENT,
Satnavri Amravati Road, Nagpur-440023

VIEWES OF GREENERY AT NIETM Premises



(Signature)
Principal
Nagarjuna Institute of Engineering
Technology & management

NAGARJUNA INSTITUTE OF ENGINEERING, TECHNOLOGY & MANAGEMENT,
Satnavri Amravati Road, Nagpur-440023




Principal
Nagarjuna Institute of Engineering,
Technology & management



Composting Unit:



Ground Water Harvesting/Recharge System



NAGARJUNA INSTITUTE OF ENGINEERING, TECHNOLOGY & MANAGEMENT,
Salmavri Amravati Road, Nagpur-440023



Nagarjuna
Institute of Engineering,
Technology & Management



GREEN AUDIT REPORT 2020-2021

1 | Page GREEN AUDIT REPORT 2020-2021


Principal
Nagarjuna Institute of Engineering,
Technology & management